

VICTORIA DAY LONG WEEKEND

MAY 20 TO 23RD 2022



# 2022 KELOWNA RIDING CLUB SPRING CLASSIC HUNTER/JUMPER SHOW



FEATURING:

DIVISIONS UP TO 1.10M / 3'6

HUNTERS AND JUMPERS

OKANAGAN BEST DRESSED, GAMBLERS CHOICE

FUN FOR THE WHOLE FAMILY

GREAT PRIZES AND SO MUCH MORE!

Event Managed by



PACIFIC EQUINE SPORT LTD.



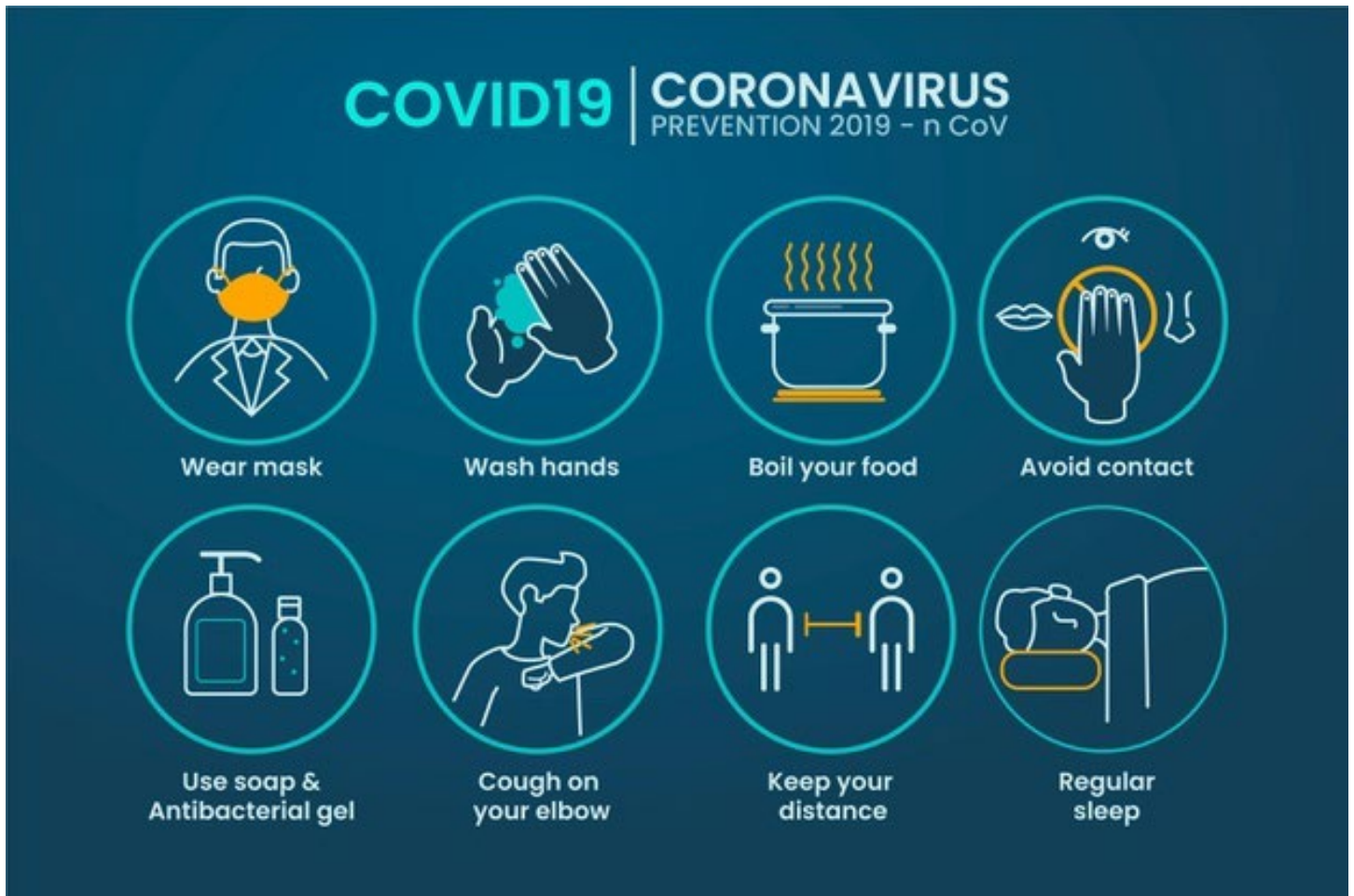
## **Show Officials**

<b>SHOW MANAGER</b>	<b>Caroline Grant - Calgary, AB</b>
<b>TECHNICAL COORDINATOR</b>	<b>Peter Grant - Calgary, AB</b>
<b>SHOW SECRETARY</b>	<b>Charlene Lazenby – Edmonton, AB</b>
<b>STEWARD</b>	<b>Diane Dominy – Edmonton, AB</b>
<b>JUMPER JUDGE</b>	<b>Steven James - Langley, BC</b>
<b>HUNTER JUDGE</b>	<b>Christine Reupke – King City, ON</b>
<b>COURSE DESIGNER</b>	<b>Peter Wong – Calgary, AB</b>
<b>HUNTER STARTER</b>	<b>Ben Watson – Sardis, BC</b>
<b>JUMPER STARTER</b>	<b>Valerie Burke- – Calgary, AB</b>
<b>ANNOUNCERS</b>	<b>Ben Watson – Sardis, BC</b>
	<b>Steven James – Langley, BC</b>
<b>MEDIC</b>	<b>Michelle Funk – Kelowna, BC</b>
<b>VETERINARY SERVICES</b>	<b>Okanagan Equine Veterinary</b>
<b>SHOW PHOTOGRAPHER</b>	<b>TBD</b>



## **COVID-19 PROCEDURES** \*\* Please read carefully \*\*

From everyone here at The Kelowna Riding Club, and Pacific Equine Sport Ltd., we thank you for your support in following protocols, as the health and safety of our clients, staff and community is important. Procedures will be updated prior to the event to comply with local, provincial, and federal mandates. Please refer to [pacificequinesport.com](http://pacificequinesport.com) for regulations concerning each event.



AN **IHG**® HOTEL







## **STATEMENT OF PRINCIPLES**

The abuse or inhumane treatment of a horse by an exhibitor, trainer or other person at an Equestrian Canada sanctioned competition shall not be tolerated under any circumstances. The competition organizing committee has the right to bar such violators from further participation in the competition if necessary

## **GENERAL RULES AND INFORMATION**

1. Every class offered herein is covered by the rules and specifications of the current rules of EC and will be held and judged in accordance with the EC Rule Book. (A602.2)
2. The management reserves the right to decide any point not covered in the rules and to correct any error or make any alterations that may be necessary in the prize list. EC rules and regulations will be followed.
3. The management reserves the right to cancel or combine any class not filled to satisfaction; whereupon exhibitors will be notified as soon as possible after close of entries.
4. Management reserves the right to change the class order, if necessary, after the close of entries. It is the responsibility of exhibitors to determine when their classes will be judged.
5. Inhumane treatment of a horse will not be tolerated. Violation of this rule, at the discretion of the organization committee, will result in disqualification and forfeiture of fees.
6. Any exhibitor using a wrong number, or having no number, may be excused, or disqualified from the class, at the judge's discretion.
6. Any exhibitor using a wrong number, or having no number, may be excused, or disqualified from the class, at the judge's discretion.
7. Exhibitors are responsible for reporting all entries to the Starter, before each respective class is called. It is the responsibility of the exhibitor to determine when their class will be judged. A gate hold will prevail as a courtesy only
8. Exhibitors are warned that any act of discourtesy or disobedience to the officials on the part of the owner, handler or rider, or any other person associated with a given entry will disqualify the horse, and result in forfeiture of entry fees for subsequent classes. Management reserves the right to remove a groom, handler/ rider and/ or horse from the show, without being liable for compensation.
9. No judge shall be approached regarding any decision during the time he is judging or is about to judge. Penalty will be disqualification from the show in its entirety.
10. The medical aid fee covers the cost of the medical aid on site. The fee does not cover personal expenses incurred by the injured party in the event of an injury or transportation by ambulance.

11. No person other than officials, staff on duty, and the judges of the classes may enter the competition rings without permission of the tournament management. Competitors are allowed in the competition rings only when competing, when the course is open for walking or during scheduled schooling rounds.

12. Dogs must be on a leash at all times.

14. Proper attire is always required in the show rings. Tucked in polo shirts may be worn in the Jumper Show Ring. Jackets are encouraged for Classic competitions, but not mandatory. Half chaps with paddock boots are permitted, but should be cleaned and presented in a manner that is respectful to the sport. Jackets and proper attire is mandatory for the Hunter Show Ring.

15. Lunging will be permitted in the hunter warm-up ring from 6:30 am to 7:15 am.

#### **ARTICLE G102 HEADGEAR**

At all EC-sanctioned competitions, anyone mounted on a horse, including foreign competitors, must wear ASTM (American Society for Testing Materials) or BSI approved helmets, with safety harness correctly fastened, at all times while mounted on the competition grounds.

#### **ARTICLE A102 SAFE SPORT ENVIRONMENTS**

2022 Mandatory Coach Status is in effect for EC sanctioned events (Bronze/Silver/Gold). Coach Status is required in order to engage in coaching activities at EC sanctioned events. Athletes may indicate that they are self coached.

#### **ARTICLE A602.7**

Per Article A801, every entry at an EC sanctioned competition shall constitute an agreement by the person responsible that the owner, lessee, trainer, manager, agent, coach, driver or rider and horse shall be subject to the EC constitution and all rules of EC and any additional rules set by the competition. It is the responsibility of all individuals participating in any capacity in EC sanctioned competitions to be knowledgeable regarding the EC constitution and the applicable rules of EC and the additional rules, if any, imposed by the competition. Do not participate in this EC sanctioned competition in any capacity if you do not consent to be bound by the constitution and rules of EC and any additional rules imposed by the competition."



**HORSE COUNCIL  
BRITISH COLUMBIA**



## STABLING & HAUL-INS

1. Stabling will be available for the show on a first come first serve basis, with two pricing options:
  - \$175 + GST for 9'x9' permanent stalls
  - \$215 + GST for 10'x10' portable stalls

including tack and feed rooms. This does not include shavings. Shavings may be purchased in the show office. Type of stall (or Haul-In) desired must be indicated on entry form, however management can not guarantee that all requests may be accommodated.

2. Hay is not available for sale from the show office.

3. No horse will be placed in an unassigned stall without approval from management.

4. Stabling will be available from 11:00 am on Thursday, May 19<sup>th</sup>, and must be vacated at the end of the day on Sunday. It is a \$40 charge to stay Wednesday or Sunday night.

5. Shavings are available from the show office. Cost will be subject to market price and posted 2 weeks prior to the event.

6. Stalls must be cleaned daily, and manure deposited in the areas provided. Please do not mix other garbage with manure.

7. Haul-ins are welcome at a cost of \$30 per day, or \$100 per week. Availability of a day stall is not guaranteed, please request use of a day stall at the show office upon arrival. Day stalls are \$75 per day, which includes the haul in fee.

8. Stalls may be bedded with shavings ONLY.

9. **Stall plaques may not be changed without management's permission.** Doing so will result in a \$50 charge.

10. Stall must be stripped at the end of the show. There will be a \$50 clean out deposit charged to each horse as cash or on a separate chq. From Show fees. Deposit will be returned upon verification that the stall has been stripped.



**THE VIEW**  
WINERY & VINEYARD

## SCHOOLING

1. Arena will be open for hacking, but not jumping at times indicated on the Daily Schedule.
2. **Lunging is permitted in the hunter schooling ring during the morning hack period each morning. There will be no lunging in the competition ring at any time.**
3. Ticketed Schooling will be available on Thursday (Move-in) day at the cost of \$15.00 per ticket +tax.

## ENTRIES

1. A deposit payment of \$250 must accompany all entries. Payment may be made by E-transfer, cheque, money order, credit card or cash. Entries without deposit will be considered late. In case of event being sold out, entries without deposit will not have a spot held.

Please make cheques payable to:  
Kelowna Riding Club  
NSF fee of \$45.00 will be charged.

2. All competitors will be required to include credit card information on entry forms, for deposit and to cover any additional expenses incurred during the horse show. Accounts may be settled via Etransfer or Credit Card information. Credit Card transactions will incur a 3.5% processing fee.
3. Entry forms MUST be signed. A parent/legal guardian must sign for juniors. A trainer's signature is not valid.
4. Please list your coach's name on the entry form, if you ride with one, to facilitate the draws for class order and stabling.
5. Hors Concours rounds will be permitted under the rules of Equine Canada.
6. Numbers must always be worn and visible while on the competition grounds.
7. All Competitors must hold an Equestrian Canada – Bronze membership, or higher to compete.
8. Entries must use the official entry form.
9. Entries for each show must be received by:

**Friday, May 6th, 2022.**

10. **Incomplete entries will be considered late. In case of event being sold out, Incomplete entries will not have a spot held.**
11. Competitors are responsible for their own errors or those of their agents in preparation of their entry forms.
12. Entries received after the closing date will be subject to a \$50 late fee.
13. The management reserves the right to limit entries in any division and to refuse or decline any entry without being liable for compensation or damages.
14. Due to limited stabling, we will not be accepting non-competing entries.



### ADD/SCRATCHES

1. Exhibitors cancelling their entries after the official Entry Closing Date but prior to the start of the show, upon presentation of a valid veterinarian certificate, will be charged for Stabling only. Veterinary Scratches after start of the show will forfeit their \$250.00 deposit.
2. Non-veterinarian scratches, after the entry closing date, will not be refunded their deposit.
4. Horse substitutions will be permitted, prior to the start of the show, for a fee of \$50.00.
5. Class adds, and scratches made prior to the show office closing the day prior will incur no penalty. Adds or scratches after closing, or the day of will be assessed a \$10.00 add fee per class; in case of a sellout, where same day adds are closed, scratches will not be refunded. Entries that fail to scratch before the end of the competition, will not be refunded. Entries may change classes for a \$10.00 charge.
6. Management reserves the right to refuse adds after the closing, or the day of. Deposits will not be refunded to entries who fail to start by the closing on the previous night.

### PRIZES & CHAMPIONSHIPS

1. Ribbons will be given to sixth place in all classes unless otherwise specified.
2. Prize money will be divided as follows unless otherwise specified:  
First=25%, Second=20%, Third=15%, Fourth=12%,  
Fifth=10%, Sixth=8%, Seventh=5%, Eighth=5%
3. Points for championships shall be awarded following Equestrian Canada Rules.
4. The Champion and Reserve titles shall be awarded to the two horses that have accumulated the most points performing over the courses in the division in which they are being shown. In the case of a tie the Championship and/or Reserve title shall be awarded to the horse that has accumulated the most points in the final competition of the division. Further ties will be decided by the penultimate competition in the division.
5. A minimum of 5 entries in a division are necessary for division championship prizes to be awarded.

### NUMBERS AND DRUG FEES

1. All competitors will receive a number for each horse. It is important in practice areas and competition rings that the horse number is clearly displayed. Jumper riders will be asked to use a bridle number, while hunter competitors will be issued a printed back number. The use of a wrong number or having no number may result in disqualification from the competition.
2. Competitors will be assessed a fee of \$4.00 per horse for drug fees for the Competition.
3. All entries must have all vaccinations, as listed in the EC rule book.

### INQUIRIES

1. Please send all entries and inquiries prior to the event to:  
[entries@pacificequinesport.com](mailto:entries@pacificequinesport.com)
2. During the event, please direct inquiries to:  
**Caroline (Cell): 587-897-2276**







# The Jump Shop

by Pacific Equine Sport Ltd.



Jump Accessories, Rails, (Wood/Alu) Jump Materials & Customs

Visit our online store at

[WWW.PACIFICEQUINESPORT.COM](http://WWW.PACIFICEQUINESPORT.COM)



## Jumper Divisions & Classes

### **Bannister GMC Buick 1.10 m Jumpers— Open to all riders and horses**

120	1.10 m Open Jumper Welcome		
	Article: 238.2.1	Ribbons To 6 <sup>th</sup>	Entry: \$35

121	1.10 m Open Jumper		
	Article: 274.5.3	Ribbons To 6 <sup>th</sup>	Entry: \$35

122	1.10 m Open Jumper Barrage		
	Article: 238.2.2	Ribbons To 6 <sup>th</sup>	Entry: \$35

### **Bannister GMC Buick 1.10 m Adult Amateur Jumpers**

125	1.10 m Adult Amateur Jumper Welcome		
	Article: 238.2.1	Ribbons To 6 <sup>th</sup>	Entry: \$35

126	1.10 m Adult Amateur Jumper		
	Article: 274.5.3	Ribbons To 6 <sup>th</sup>	Entry: \$35

127	1.10 m Adult Amateur Jumper Barrage		
	Article: 238.2.2	Ribbons To 6 <sup>th</sup>	Entry: \$35

### **Bannister GMC Buick 1.10 m Children's Jumpers**

130	1.10 m Children's Jumper Welcome		
	Article: 238.2.1	Ribbons To 6 <sup>th</sup>	Entry: \$35

131	1.10 m Children's Jumper		
	Article: 274.5.3	Ribbons To 6 <sup>th</sup>	Entry: \$35

132	1.10 m Children's Jumper Barrage		
	Article: 238.2.2	Ribbons To 6 <sup>th</sup>	Entry: \$35

### **Thunderbird Show Park 1.00 m Jumpers— Open to all riders and horses**

135	1.00 m Open Jumper Welcome		
	Article: 238.2.1	Ribbons To 6 <sup>th</sup>	Entry: \$35

136	1.00 m Open Jumper	Article: 274.5.3	Ribbons To 6 <sup>th</sup>	Entry: \$35
-----	--------------------	------------------	----------------------------	-------------

137	1.00 m Open Jumper Barrage	Article: 238.2.2	Ribbons To 6 <sup>th</sup>	Entry: \$35
-----	----------------------------	------------------	----------------------------	-------------

**Thunderbird Show Park 1.00 m Low Child & Adult Jumpers— Open to junior and amateur riders**

140	Low Child & Adult Jumper Welcome	Article: 238.2.1	Ribbons To 6 <sup>th</sup>	Entry: \$35
-----	----------------------------------	------------------	----------------------------	-------------

141	Low Child & Adult Jumper	Article: 274.5.3	Ribbons To 6 <sup>th</sup>	Entry: \$35
-----	--------------------------	------------------	----------------------------	-------------

142	Low Child & Adult Jumper Barrage	Article: 238.2.2	Ribbons To 6 <sup>th</sup>	Entry: \$35
-----	----------------------------------	------------------	----------------------------	-------------

**CapriCMW Insurance 0.90 m Pony Jumpers— Open to junior riders**

145	0.90m Pony Jumper Welcome	Article: 238.2.1	Ribbons To 6 <sup>th</sup>	Entry: \$30
-----	---------------------------	------------------	----------------------------	-------------

146	0.90 m Pony Jumper	Article: 274.5.3	Ribbons To 6 <sup>th</sup>	Entry: \$30
-----	--------------------	------------------	----------------------------	-------------

147	0.90 m Pony Jumper Barrage	Article: 238.2.2	Ribbons To 6 <sup>th</sup>	Entry: \$30
-----	----------------------------	------------------	----------------------------	-------------

**Bannister GMC Buick 0.90 m Jumpers— Open to all riders and horses**

150	0.90 m Open Jumper Welcome	Article: 238.2.1	Ribbons To 6 <sup>th</sup>	Entry: \$35
-----	----------------------------	------------------	----------------------------	-------------

151	0.90 m Open Jumper	Article: 274.5.3	Ribbons To 6 <sup>th</sup>	Entry: \$35
-----	--------------------	------------------	----------------------------	-------------

152	0.90 m Open Jumper Barrage	Article: 238.2.2	Ribbons To 6 <sup>th</sup>	Entry: \$35
-----	----------------------------	------------------	----------------------------	-------------


**Bannister GMC Buick 0.90 m Modified Child & Adult Jumpers– Open to junior and amateur riders**

155      0.90 m Modified Child & Adult Jumper Welcome  
Article: 238.2.1      Ribbons To 6<sup>th</sup>      Entry: \$35

156      0.90 m Modified Child & Adult Jumper  
Article: 274.5.3      Ribbons To 6<sup>th</sup>      Entry: \$35

157      0.90 m Modified Child & Adult Jumper Barrage  
Article: 238.2.2      Ribbons To 6<sup>th</sup>      Entry: \$35

**SaddleFit CAN 0.85 m Low Training Jumpers– Open to all riders and horses**

160      0.85 m Low Training Jumper Welcome  
Article: 238.2.1/G611 (One Round, Optimum Time)  
Ribbons To 6<sup>th</sup>      Entry: \$30

161      0.85 m Low Training Jumper  
Article: 238.2.1      Ribbons To 6<sup>th</sup>      Entry: \$30

162      0.85 m Low Training Jumper Barrage  
Article: 238.2.2      Ribbons To 6<sup>th</sup>      Entry: \$30

**SaddleFit CAN 0.85 m Junior & Amateur Low Training Jumpers– Open to junior and amateur riders**

165      0.85 m Jr & Am Low Training Jumper Welcome  
Article: 238.2.1/G611 (One Round, Optimum Time)  
Ribbons To 6<sup>th</sup>      Entry: \$30

166      0.85 m Jr & Am Low Training Jumper  
Article: 238.2.1      Ribbons To 6<sup>th</sup>      Entry: \$30

167      0.85 m Jr & Am Low Training Jumper Barrage  
Article: 238.2.2      Ribbons To 6<sup>th</sup>      Entry: \$30

**Okanagan Wash Zone 0.75 m Open Novice Jumpers– Open to all riders and horses**

170      0.75 m Open Novice Jumper Welcome  
Article: 238.2.1/G611 (One Round, Optimum Time)  
Ribbons To 6<sup>th</sup>      Entry: \$30





171	0.75 m Open Novice Jumper		
	Article: 238.2.1/G611 (One Round, Optimum Time)		
	Ribbons To 6 <sup>th</sup>		Entry: \$30

172	0.75 m Open Novice Jumper Barrage		
	Article: 238.2.2	Ribbons To 6 <sup>th</sup>	Entry: \$30

**Okanagan Wash Zone 0.75 m Junior & Amateur Novice Jumpers– Open to Jr & Am riders**

175	0.75 m Jr & Am Novice Jumper Welcome		
	Article: 238.2.1/G611 (One Round, Optimum Time)		
	Ribbons To 6 <sup>th</sup>		Entry: \$30

176	0.75 m Jr & Am Novice Jumper		
	Article: 238.2.1/G611 (One Round, Optimum Time)		
	Ribbons To 6 <sup>th</sup>		Entry: \$30

177	0.75 m Jr & Am Novice Jumper Barrage		
	Article: 238.2.2	Ribbons To 6 <sup>th</sup>	Entry: \$30

**CapriCMW Insurance 0.70 m Beginner Jumpers– Open to all riders and horses**

180	0.70 m Open Beginner Jumper Welcome		
	Article: 238.2.1/G611 (One Round, Optimum Time)		
	Ribbons To 6 <sup>th</sup>		Entry: \$30

181	0.70 m Open Beginner Jumper		
	Article: 238.2.1/G611 (One Round, Optimum Time)		
	Ribbons To 6 <sup>th</sup>		Entry: \$30

182	0.70 m Open Beginner Jumper Barrage		
	Article: 238.2.2	Ribbons To 6 <sup>th</sup>	Entry: \$30

**CapriCMW Insurance 0.70 m Junior & Amateur Beginner Jumpers– Open to Jr & Am riders**

185	0.70 m Jr & Am Beginner Jumper Welcome		
	Article: 238.2.1/G611 (One Round, Optimum Time)		
	Ribbons To 6 <sup>th</sup>		Entry: \$30





186	0.70 m Jr & Am Beginner Jumper	Article: 238.2.1/G611 (One Round, Optimum Time) Ribbons To 6 <sup>th</sup>	Entry: \$30
187	0.70 m Jr & Am Beginner Jumper Barrage	Article: 238.2.2 Ribbons To 6 <sup>th</sup>	Entry: \$30
<b>Greenhawk Kelowna 0.60 m Basic Jumpers– Open to all riders and horses- No Oxers</b>			
190	0.60 m Basic Jumper Welcome	Article: 238.2.1/G611 (One Round, Optimum Time) Ribbons To 6 <sup>th</sup>	Entry: \$30
191	0.60 m Basic Jumper	Article: 238.2.1/G611 (One Round, Optimum Time) Ribbons To 6 <sup>th</sup>	Entry: \$30
192	0.60 m Basic Jumper Barrage	Article: 238.2.2/G611 (Jump-Off, Optimum Time) Ribbons To 6 <sup>th</sup>	Entry: \$30
<b>Greenhawk Kelowna 0.60 m Short &amp; Long Stirrup Jumpers– Open to junior riders- (No Oxers)</b>			
195	0.60 m Short & Long Stirrup Jumper Welcome	Article: 238.2.1/G611 (One Round, Optimum Time) Ribbons To 6 <sup>th</sup>	Entry: \$30
196	0.60 m Short & Long Stirrup Jumper	Article: 238.2.1/G611 (One Round, Optimum Time) Ribbons To 6 <sup>th</sup>	Entry: \$30
197	0.60 m Short & Long Stirrup Jumper Barrage	Article: 238.2.2/G611 (Jump-Off, Optimum Time) Ribbons To 6 <sup>th</sup>	Entry: \$30
<b>Classics &amp; Feature Competitions</b> (Classic entries must have competed in at least one class at the corresponding height)			
101	\$600 1.10 m Jumper Classic	Article: 238.2.2 Ribbons To 6 <sup>th</sup> , Prizes to 6th	Entry: \$65



102	\$500 1.00 m Jumper Classic	
	Article: 238.2.2 Ribbons To 6 <sup>th</sup> , Prizes to 6th	Entry: \$60
103	\$400 0.90 m Jumper Classic (Combinations to be adjusted for ponies)	
	Article: 238.2.2 Ribbons To 6 <sup>th</sup> , Prizes to 6th	Entry: \$55
104	\$300 0.85 m Jumper Classic	
	Article: 238.2.2 Ribbons To 6 <sup>th</sup> , Prizes to 6th	Entry: \$50
105	\$500 Bannister GMC Buick 0.75 m- 1.10 m Costume Gambler's Choice	
	Article: 270 Ribbons To 6 <sup>th</sup> , Prizes to 6th	Entry: \$65

**Open to all entries. Height of jumps in the first round will range from 0.75 m to 1.00 m. Joker to be set at 1.10 m. Prizes awarded for 3 best costumes. Entries may also choose their own music, to be judged as part of their costume. Music must be submitted by Saturday morning at 9:30 am**



**WALES EQUINE  
VETERINARY SERVICES**

CALL US 250-258-2299



Keep Your Horse on the Path to Success



the future is friendly®

### Clear Round Jumper Classes

300	0.60 m Clear Round Jumper I		
	Article: 238.1.1	Clear Round Ribbons	Entry: \$25
301	0.70 m Clear Round Jumper I		
	Article: 238.1.1	Clear Round Ribbons	Entry: \$25
302	0.75 m Clear Round Jumper I		
	Article: 238.1.1	Clear Round Ribbons	Entry: \$25
303	0.85 m Clear Round Jumper I		
	Article: 238.1.1	Clear Round Ribbons	Entry: \$25
304	0.90 m Pony Clear Round Jumper I		
	Article: 238.1.1	Clear Round Ribbons	Entry: \$25
305	0.90 m Clear Round Jumper I		
	Article: 238.1.1	Clear Round Ribbons	Entry: \$25
306	1.00 m Clear Round Jumper I		
	Article: 238.1.1	Clear Round Ribbons	Entry: \$25
307	1.10 m Clear Round Jumper I		
	Article: 238.1.1	Clear Round Ribbons	Entry: \$25
308	0.60 m Clear Round Jumper II		
	Article: 238.1.1	Clear Round Ribbons	Entry: \$25
309	0.70 m Clear Round Jumper II		
	Article: 238.1.1	Clear Round Ribbons	Entry: \$25
310	0.75 m Clear Round Jumper II		
	Article: 238.1.1	Clear Round Ribbons	Entry: \$25
311	0.85 m Clear Round Jumper II		
	Article: 238.1.1	Clear Round Ribbons	Entry: \$25
312	0.90 m Pony Clear Round Jumper II		
	Article: 238.1.1	Clear Round Ribbons	Entry: \$25



313	0.90 m Clear Round Jumper II		
	Article: 238.1.1	Clear Round Ribbons	Entry: \$25
314	1.00 m Clear Round Jumper II		
	Article: 238.1.1	Clear Round Ribbons	Entry: \$25
315	1.10 m Clear Round Jumper II		
	Article: 238.1.1	Clear Round Ribbons	Entry: \$25
316	0.60 m Clear Round Jumper III		
	Article: 238.1.1	Clear Round Ribbons	Entry: \$25
317	0.70 m Clear Round Jumper III		
	Article: 238.1.1	Clear Round Ribbons	Entry: \$25
318	0.75 m Clear Round Jumper III		
	Article: 238.1.1	Clear Round Ribbons	Entry: \$25
319	0.85 m Clear Round Jumper III		
	Article: 238.1.1	Clear Round Ribbons	Entry: \$25
320	0.90 m Pony Clear Round Jumper III		
	Article: 238.1.1	Clear Round Ribbons	Entry: \$25
321	0.90 m Clear Round Jumper III		
	Article: 238.1.1	Clear Round Ribbons	Entry: \$25
322	0.60 m Clear Round Jumper IV		
	Article: 238.1.1	Clear Round Ribbons	Entry: \$25





## Hunter Divisions & Classes

### Okanagan Restorations - Performance Hunter 3'6"

**Entry Fees:** **\$135 for division/\$30 Over Fences/\$20 Under Saddle**

450, 451, 452	Performance Hunter 3'6" – Over Fences
453	Performance Handy Hunter 3'6" – Over Fences
454	Performance Hunter 3'6" – Under Saddle

### Okanagan Restorations - Performance Hunter 3'3"

**Entry Fees:** **\$135 for division/\$30 Over Fences/\$20 Under Saddle**

445, 446, 447	Performance Hunter 3'3" – Over Fences
448	Performance Handy Hunter 3'3" – Over Fences
449	Performance Hunter 3'3" – Under Saddle

### 2<sup>nd</sup> Year Pre-Green Hunter 3'3"

**Entry Fees:** **\$135 for division/\$30 Over Fences/\$20 Under Saddle**

440, 441, 442, 443	2 <sup>nd</sup> Year Pre-Green Hunter 3'3" – Over Fences
444	2 <sup>nd</sup> Year Pre-Green Hunter – Under Saddle

### KRC Hunter 3'0"

**Entry Fees:** **\$135 for division/\$30 Over Fences/\$20 Under Saddle**

435, 436, 437, 438	KRC Hunter 3'0" – Over Fences
439	KRC Hunter – Under Saddle

### 1<sup>st</sup> Year Pre-Green Hunter 3'0"

**Entry Fees:** **\$135 for division/\$30 Over Fences/\$20 Under Saddle**

430, 431, 432, 433	1 <sup>st</sup> Year Pre-Green Hunter 3'0" – Over Fences
434	1 <sup>st</sup> Year Pre-Green Hunter – Under Saddle

### Orchard Hunter 2'9"

**Entry Fees:** **\$135 for division/\$30 Over Fences/\$20 Under Saddle**

425, 426, 427, 428	Orchard Hunter 2'9" – Over Fences
429	Orchard Hunter – Under Saddle



### **Diamond H Tack Ogopogo Hunter 2'6"**

**Entry Fees: \$135 for division/\$30 Over Fences/\$20 Under Saddle**

420, 421, 422, 423 Ogopogo Hunter 2'6" – Over Fences

424 Ogopogo Hunter – Under Saddle

### **Okanagan Equine Vet Baby Green Hunter 2'6"**

**Entry Fees: \$135 for division/\$30 Over Fences/\$20 Under Saddle**

415, 416, 417, 418 Baby Green Hunter 2'6" – Over Fences

419 Baby Green Hunter – Under Saddle

### **Novice Hunter 2'3" – No Oxers**

**Entry Fees: \$115 for division/\$25 Over Fences/\$20 Under Saddle**

410, 411, 412, 413 Novice Hunter 2'3" – Over Fences

414 Novice Hunter – Under Saddle

### **Greenhawk Kelowna Beginner Hunter 2'0" – No Oxers**

**Entry Fees: \$115 for division/\$25 Over Fences/\$20 Under Saddle**

405, 406, 407, 408 Beginner Hunter 2'0" – Over Fences

409 Beginner Hunter – Under Saddle

### **Greenhawk Kelowna Cross Rail Hunter 18" – No Oxers**

**Entry Fees: \$115 for division/\$25 Over Fences/\$20 Under Saddle**

400, 401, 402, 403 Cross Rail Hunter 18" – Over Fences

404 Cross Rail Hunter – Under Saddle

### **Move 101.5 Junior Hunter 3'6"**

**Entry Fees: \$135 for division/\$30 Over Fences/\$20 Under Saddle**

545, 546, 547 Junior Hunter 3'6" – Over Fences

548 Junior Handy Hunter 3'6" – Over Fences

549 Junior Hunter – Under Saddle

**BANNISTER**  
G M C B U I C K


**Move 101.5 Modified Junior & Amateur Hunter 3'3"**

<b>Entry Fees:</b>	<b>\$135 for division/\$30 Over Fences/\$20 Under Saddle</b>
540, 541, 542	Modified Junior & Amateur Hunter 3'3" – Over Fences
543	Modified Junior & Amateur Handy Hunter 3'3" – Over Fences
544	Modified Junior & Amateur Hunter – Under Saddle

**Move 101.5 Adult Amateur Hunter 3'0"**

<b>Entry Fees:</b>	<b>\$135 for division/\$30 Over Fences/\$20 Under Saddle</b>
535, 536, 537, 538	Adult Amateur Hunter 3'0" – Over Fences
539	Adult Amateur Hunter – Under Saddle

**Juniper Hill Children's Hunter 3'0"**

<b>Entry Fees:</b>	<b>\$135 for division/\$30 Over Fences/\$20 Under Saddle</b>
530, 531, 532, 533	Children's Hunter 3'0" – Over Fences
534	Children's Hunter – Under Saddle

**Scope Equestrian Modified Children's & Adult Amateur Hunter 2'9"**

<b>Entry Fees:</b>	<b>\$135 for division/\$30 Over Fences/\$20 Under Saddle</b>
525, 526, 527, 528	Modified Children's & Adult Amateur Hunter 2'9" – Over Fences
529	Modified Children's & Adult Amateur Hunter – Under Saddle

**Pre - Children's & Adult Amateur Hunter 2'6"**

<b>Entry Fees:</b>	<b>\$135 for division/\$30 Over Fences/\$20 Under Saddle</b>
520, 521, 522, 523	Pre - Children's & Adult Amateur Hunter 2'6" – Over Fences
524	Pre - Children's & Adult Amateur Hunter – Under Saddle

**Long Stirrup Hunter 2'3" – No Oxers**

<b>Entry Fees:</b>	<b>\$115 for division/\$25 Over Fences/\$20 Under Saddle</b>
515, 516, 517, 518	Long Stirrup Hunter 2'3" – Over Fences
519	Long Stirrup Hunter – Under Saddle





**Corner Creek Farms Short Stirrup Pony Hunter 2'3" – No Oxers, distances will not be adjusted for pony size**

**Entry Fees: \$115 for division/\$25 Over Fences/\$20 Under Saddle**

510, 511, 512, 513 Short Stirrup Pony Hunter 2'3" – Over Fences  
514 Long Stirrup Hunter – Under Saddle

**Short Stirrup Hunter 2'3" – No Oxers**

**Entry Fees: \$115 for division/\$25 Over Fences/\$20 Under Saddle**

505, 506, 507, 508 Long Stirrup Hunter 2'3" – Over Fences  
509 Long Stirrup Hunter – Under Saddle

**Maiden Child & Adult Hunter 2'0" – No Oxers**

**Entry Fees: \$115 for division/\$25 Over Fences/\$20 Under Saddle**

500, 501, 502, 503 Novice Child & Adult Hunter 2'0" – Over Fences  
504 Novice Child & Adult Hunter – Under Saddle

**Corner Creek Farms Large Pony Hunter 2'9"**

**Entry Fees: \$135 for division/\$30 Over Fences/\$20 Under Saddle**

550L, 551L, 552L Large Pony Hunter 2'9" – Over Fences  
553L Large Pony Handy Hunter 2'9" – Over Fences  
554L Large Pony Hunter – Under Saddle

**Corner Creek Farms Medium Pony Hunter 2'6"**

**Entry Fees: \$135 for division/\$30 Over Fences/\$20 Under Saddle**

550M, 551M, 552M Medium Pony Hunter 2'6" – Over Fences  
553M Medium Pony Handy Hunter 2'6" – Over Fences  
554M Medium Pony Hunter – Under Saddle

**Corner Creek Farms Small Pony Hunter 2'3"**

**Entry Fees: \$135 for division/\$30 Over Fences/\$20 Under Saddle**

550S, 551S, 552S Small Pony Hunter 2'3" – Over Fences  
553S Small Pony Handy Hunter 2'3" – Over Fences  
554S Small Pony Hunter – Under Saddle



### Large Green Pony Hunter 2'6"

**Entry Fees: \$115 for division/\$25 Over Fences/\$20 Under Saddle**

555L, 556L, 557L, 558L      Large Green Pony Hunter 2'6" – Over Fences  
559L      Large Green Pony Hunter – Under Saddle

### Medium Green Pony Hunter 2'3"

**Entry Fees: \$115 for division/\$25 Over Fences/\$20 Under Saddle**

555M, 556M, 557M, 558M      Medium Green Pony Hunter 2'3" – Over Fences  
559M      Medium Green Pony Hunter – Under Saddle

### Small Green Pony Hunter 2'0"

**Entry Fees: \$115 for division/\$25 Over Fences/\$20 Under Saddle**

555S, 556S, 557S, 558S      Small Green Pony Hunter 2'0" – Over Fences  
559S      Small Green Pony Hunter – Under Saddle

### Low Hunter Classes

900	Low Hunter 2' –No Oxers	Entry: \$25
901	Low Hunter 2'3" –No Oxers	Entry: \$25
902	Low Hunter 2'6"	Entry: \$25
903	Low Hunter 2'9"	Entry: \$25
904	Low Hunter 3'0"	Entry: \$25
905	Low Hunter 3'3"	Entry: \$25
906	Low Hunter 3'6"	Entry: \$25
907	Low Hunter 3'0"	Entry: \$25
908	Low Hunter 2' –No Oxers	Entry: \$25
909	Low Hunter 2'3" –No Oxers	Entry: \$25
910	Low Hunter 2'6"	Entry: \$25
911	Low Hunter 2'9"	Entry: \$25
912	Low Hunter 3'0"	Entry: \$25
913	Low Hunter 3'3"	Entry: \$25



914	Low Hunter 3'6"	Entry: \$25
915	Low Hunter 3'0"	Entry: \$25
916	Low Pony Hunter (Adjusted for pony size)	Entry: \$25
917	Low Pony Hunter (Adjusted for pony size)	Entry: \$25
918	Low Green Pony Hunter (Adjusted for pony size)	Entry: \$25
919	Low Hunter 2'0" -No Oxers	Entry: \$25
920	Low Hunter 2'3" -No Oxers	Entry: \$25
921	Low Hunter 2'6"	Entry: \$25
922	Low Hunter 2'9"	Entry: \$25
923	Low Hunter 3'0"	Entry: \$25
924	Low Hunter 3'3"	Entry: \$25
925	Low Hunter 3'6"	Entry: \$25
926	Low Green Pony Hunter (Adjusted for pony size)	Entry: \$25

### Feature Hunter Classes

1000 2'6"/2'9" KRC Hunter Derby -Top 12 return for 2<sup>nd</sup> round Entry: \$55

**Open to all horses and riders. To be run in two different heights (2'6", 2'9"), but judged together. Course will be set over natural hunter type fences, including, but not limited to: Hay bales, logs, coups, etc. First Round will contain 10 to 12 fences and will be scored as a traditional hunter round. Second Round will contain 8 to 10 fences and be judged on handiness. Top 12 return for the Second Round.**

590	\$300 KRC Pony Hunter Classic — All entries advance to 2 <sup>nd</sup> Round	Entry: \$45
591	\$200 Short and Long Stirrup Classic - All entries advance to 2 <sup>nd</sup> Round	Entry: \$40
592	\$250 Pre – Children's & Adult Hunter Classic — All entries advance to 2 <sup>nd</sup> Round	Entry: \$40
593	\$300 Modified Children's & Adult Hunter Classic - All entries advance to 2 <sup>nd</sup> Rd	Entry: \$45
594	\$450 Children's & Adult Hunter Classic — All entries advance to 2 <sup>nd</sup> Round	Entry: \$50
595	\$500 3'3"/3'6" Junior & Amateur Hunter Classic - All entries advance to 2 <sup>nd</sup> Rd	Entry: \$50





## Equitation Divisions & Classes

### Modified Junior & Amateur Equitation 3'3"

<b>Entry Fees:</b>	<b>\$30 Over Fences/\$20 Flat</b>
640, 641	Modified Junior & Amateur Equitation 3'3" – Over Fences
642	Modified Junior & Amateur Equitation – Flat

### Adult Amateur Equitation 3'0"

<b>Entry Fees:</b>	<b>\$30 Over Fences/\$20 Flat</b>
635, 636	Adult Amateur Equitation 3'0" – Over Fences
637	Adult Amateur Equitation – Flat

### Children's Equitation 3'0"

<b>Entry Fees:</b>	<b>\$30 Over Fences/\$20 Flat</b>
630, 631	Children's Equitation 3'3" – Over Fences
632	Children's Equitation – Flat

### Modified Children's & Adult Equitation 2'9"

<b>Entry Fees:</b>	<b>\$30 Over Fences/\$20 Flat</b>
625, 626	Modified Children's & Adult Equitation 2'9" – Over Fences
627	Modified Children's & Adult Equitation – Flat

### Pre - Children's & Adult Equitation 2'6"

<b>Entry Fees:</b>	<b>\$30 Over Fences/\$20 Flat</b>
620, 621	Pre - Children's & Adult Equitation 2'9" – Over Fences
622	Pre - Children's & Adult Equitation – Flat

### Long Stirrup Equitation 2'3" - No oxers

<b>Entry Fees:</b>	<b>\$30 Over Fences/\$20 Flat</b>
615, 616	Long Stirrup Equitation 2'3" – Over Fences
617	Long Stirrup Equitation – Flat

### Short Stirrup Pony Equitation 2'3" - No Oxers, distances will not be adjusted for pony size

<b>Entry Fees:</b>	<b>\$30 Over Fences/\$20 Flat</b>
610, 611	Short Stirrup Pony Equitation 2'3" – Over Fences





612

Short Stirrup Pony Equitation – Flat

### Short Stirrup Equitation 2'3" - No oxers

**Entry Fees:****\$30 Over Fences/\$20 Flat**

605, 606

Short Stirrup Equitation 2'3" – Over Fences

607

Short Stirrup Equitation – Flat

### Large Pony Equitation 2'9"

**Entry Fees:****\$30 Over Fences/\$20 Flat**

650L, 651L

Large Pony Equitation 2'9" – Over Fences

652L

Large Pony Equitation – Flat

### Medium Pony Equitation 2'6"

**Entry Fees:****\$30 Over Fences/\$20 Flat**

650M, 651M

Large Pony Equitation 2'6" – Over Fences

652M

Large Pony Equitation – Flat

### Small Pony Equitation 2'3"

**Entry Fees:****\$30 Over Fences/\$20 Flat**

650S, 651S

Small Pony Equitation 2'3" – Over Fences

652S

Small Pony Equitation – Flat

### Equitation Classes

690	'A' Equitation – Over Fences	Entry: \$30
-----	------------------------------	-------------

691	'B' Equitation – Over Fences	Entry: \$30
-----	------------------------------	-------------

692	'C' Equitation – Over Fences	Entry: \$30
-----	------------------------------	-------------

693	'A' Equitation – Flat	Entry: \$25
-----	-----------------------	-------------

694	'B' Equitation - Flat	Entry: \$25
-----	-----------------------	-------------

695	'C' Equitation – Flat	Entry: \$25
-----	-----------------------	-------------

680	KRC Adult Medal 3'0"	Entry: \$30
-----	----------------------	-------------

**Open To riders 18 years and older. Minimum 8 fences and there may be a combination at the course designer's discretion. There will be 2 tests incorporated to the course**

681	KRC Children's Medal 3'0"	Entry: \$30
<b>Open To riders 17 years and under. Minimum 8 fences and there may be a combination at the course designer's discretion. There will be 2 tests incorporated to the course.</b>		
682	KRC Pony Medal	Entry: \$30
<b>Open To riders 17 years and under, mounted on Ponies. Minimum 8 fences and there may be a combination at the course designer's discretion. There will be 2 tests incorporated to the course. Ponies jump 2'9" for Larges, 2'6" for Mediums, and 2'3" for Smalls.</b>		
683	BCHJA Medal 3'3"	Entry: \$30
684	CET Mini Medal	Entry: \$30
685	Thunderbird Good Hands & Seat Medal 3'6"	Entry: \$30
686	Thunderbird Good Hands & Seat Medal 3'0"	Entry: \$30

**682 – KRC Pony Medal – Open To riders 17 years and under, mounted on Ponies. Minimum 8 fences and there may be a combination at the course designer's discretion. There will be 2 tests incorporated to the course. Ponies jump 2'9" for Larges, 2'6" for Mediums, and 2'3" for Smalls.**



KELOWNA

**BANNISTER**  
G M C B U I C K

## Off-site Trailer Parking

If you require to park a trailer during the week, please be sure to have it registered with the Horse Show Office. Please include Make, Model and Number of Horses it's able to haul, to receive a parking pass.

Trailers will be parked off-site, just 1km down the road at **the Kelowna Evangel Church parking lot, 3261 Gordon Drive.**

We would also like to keep Thursday's Move-in as organized as possible. Please indicate on the entry form when you plan to arrive to unload horses and equipment within the timeframes indicated on the schedule.

Thank you so much for your cooperation, and if you have any questions, please feel free to contact show management.

